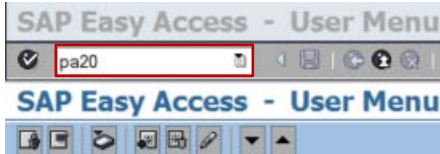


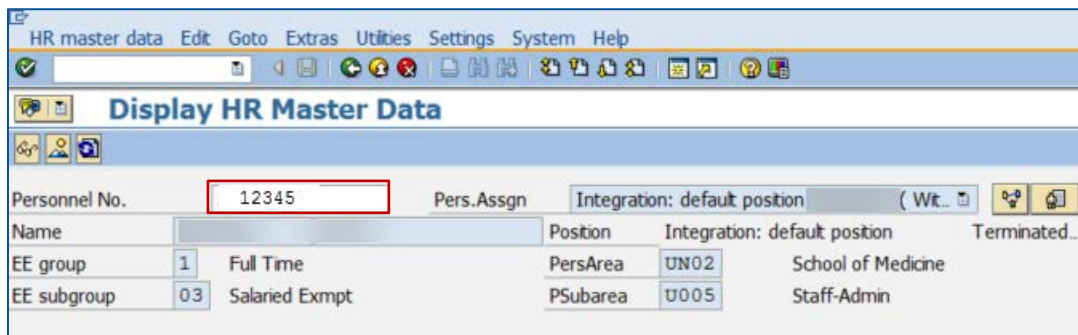
Not Eligible for Rehire - ECC


The following steps illustrate how to locate rehire for eligibility status in SAP.

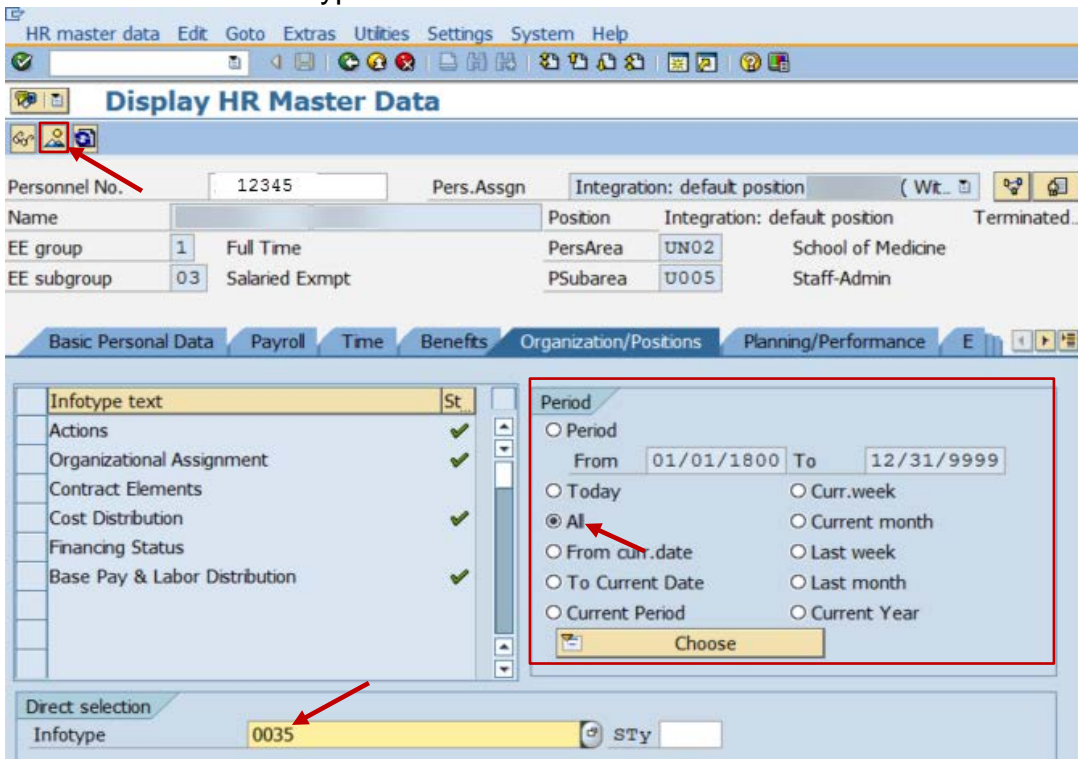
1. Open ECC and type **PA20** in the Command Field.



2. Enter the Personnel Number (pennr) in the **Personnel No.** field and press **Enter** on your keyboard.



3. Under the Period section, click **All**.
4. Enter **0035** in the Infotype field and click **Overview** 



Not Eligible for Rehire - ECC

5. If the employee **IS** eligible for rehire, Company Instructions note will appear at the bottom of the screen.

The screenshot shows the ECC system interface for an employee. The 'Company Instructions' field is highlighted with a red box, and a red arrow points to the message: "No data stored for Company Instructions in the selected period".

Infotype text	St.
Actions	✓
Organizational Assignment	✓
Contract Elements	
Cost Distribution	✓
Financing Status	
Base Pay & Labor Distribution	✓

Period: From 01/01/1800 To 12/31/9999

Direct selection: Infotype Company Instructions STy

✓ No data stored for Company Instructions in the selected period

6. If the employee is **NOT** eligible for rehire, Company Instructions details will display.

The screenshot shows the ECC system interface for an employee. The 'Company Instructions' details are displayed in a table, with a red box highlighting the row: "05/01/2007 12/31/9999 99 Not eligible for rehire".

Overview Company Instructions (0035)

From	To	STy	Name	Locked
05/01/2007	12/31/9999	99	Not eligible for rehire	